



An online exhibition

September – end of January 2021

Society of Catholic Artists  
& commission4mission

COMMISSIONS / SALES by arrangement with artists

For comments or membership: [maryjeandonaghey5@gmail.com](mailto:maryjeandonaghey5@gmail.com)

Mary Jean Donaghey – Chairman, Membership, Exhibitions, Bulletin

Kieran Hughes – Graphics, Web design, IT Coordinator

Liz Asher – Selector

Myfanwy Franks – Selector

Sarah Sharpe – Selector

Sinclair Webster - Selector



Society of Catholic Artists © 2021

# Icons

# Helen McIlldowie-Jenkins SCA

# The Holy Mandylion with Saints Veronica and Helena (Cardiff Oratory)

## Egg tempera and gold leaf on panel

40 x 40 x 3 cm

NFS

Helen McIldowie-Jenkins is a professional artist, iconographer and Secular Franciscan only using the traditional medieval panel painting techniques of egg tempera and water gilding to compose original devotional art as well as archetypal Byzantine Greek and Russians icons.

Helen has worked in the London art auction world in the Russian Icons and Work of Art department at MacDougall Arts and at Christies. Helen has also worked in museum and third sector teaching Late Medieval Italian Art History.



# Icons

Helen McIldowie-Jenkins SCA

St Mark The Evangelist  
(Our Lady & St. Thomas, Harrow on the Hill)

Egg tempera and gold leaf on panel

109 x 57 x 3 cm

NFS





# Icons

Helen McIldowie-Jenkins SCA

St Cuthbert with Farne Island Creatures

Egg tempera and gold leaf on panel

32 x 15 x 2.5 cm

NFS

[elenisicons@gmail.com](mailto:elenisicons@gmail.com)

[www.elenisicons.co.uk](http://www.elenisicons.co.uk)

See also: 2D Secular - Paintings



# Icons

Alexis Paine SCA

Archangel Michael

Painted in traditional Russian  
and Greek Styles

30 x 40 cm





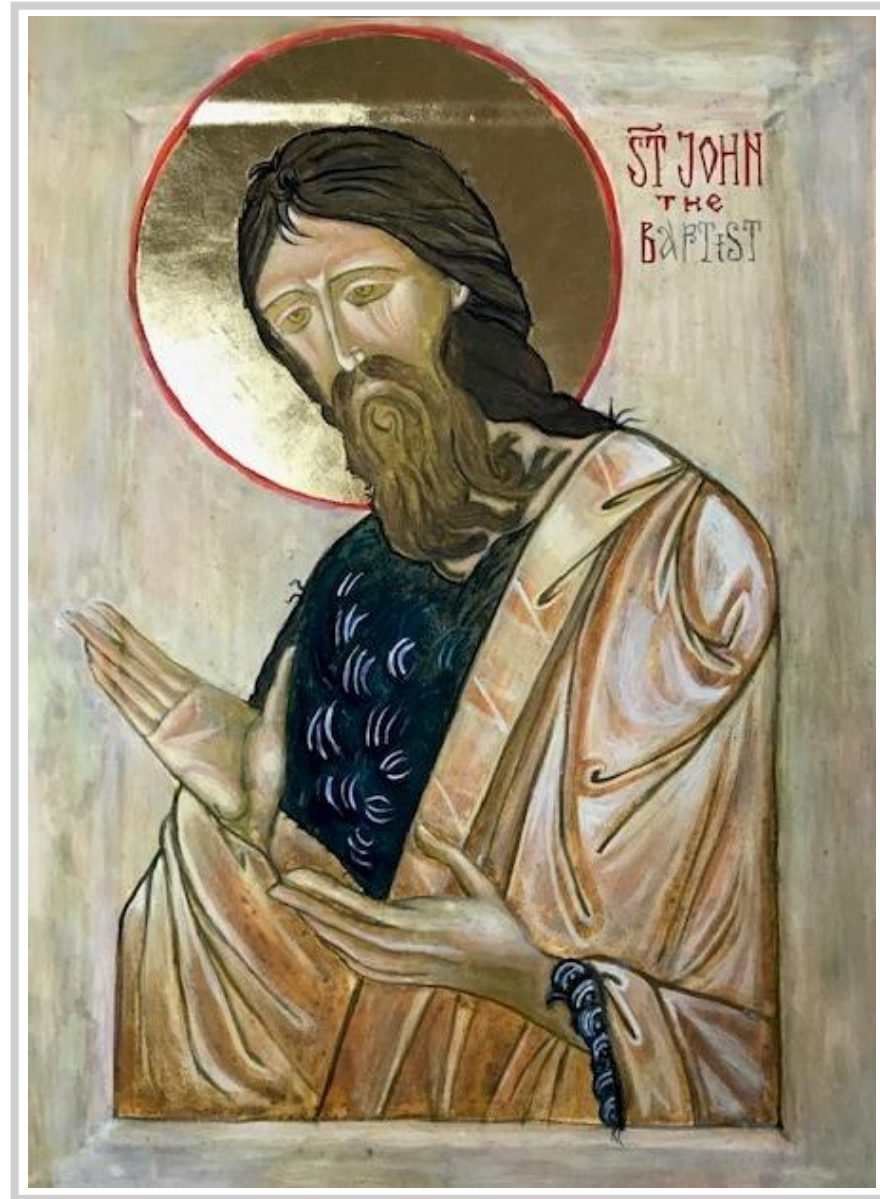
# Icons

Alexis Paine SCA

St John The Baptist

Painted in traditional Russian and  
Greek Styles

25 x 35 cm



# Icons

Alexis Paine SCA

The Holy Trinity

Painted in traditional Russian and  
Greek Styles

20 x 25 cm

[alexis.paine910@gmail.com](mailto:alexis.paine910@gmail.com)





# Icons

Laura Pickering SCA

Our Lady of Walsingham

Egg tempera on gesso board with raised frame.

15 x 11 x 1 cm

NFS





# Icons

Laura Pickering SCA

Mother and Child

Egg tempera on gesso board

12 x 10 x 0.5 cm

NFS



# Icons

Laura Pickering SCA

Our Lady and Jesus Christ Enthroned

Watercolour and gouache  
on watercolour board

21 x 16 x 1 cm

NFS

[oscarette32000@gmail.com](mailto:oscarette32000@gmail.com)

See also: 2D Secular - Paintings





# Stained glass

Sophie D'Souza SCA

Son, Father & Holy Spirit

Stained Glass

NFS



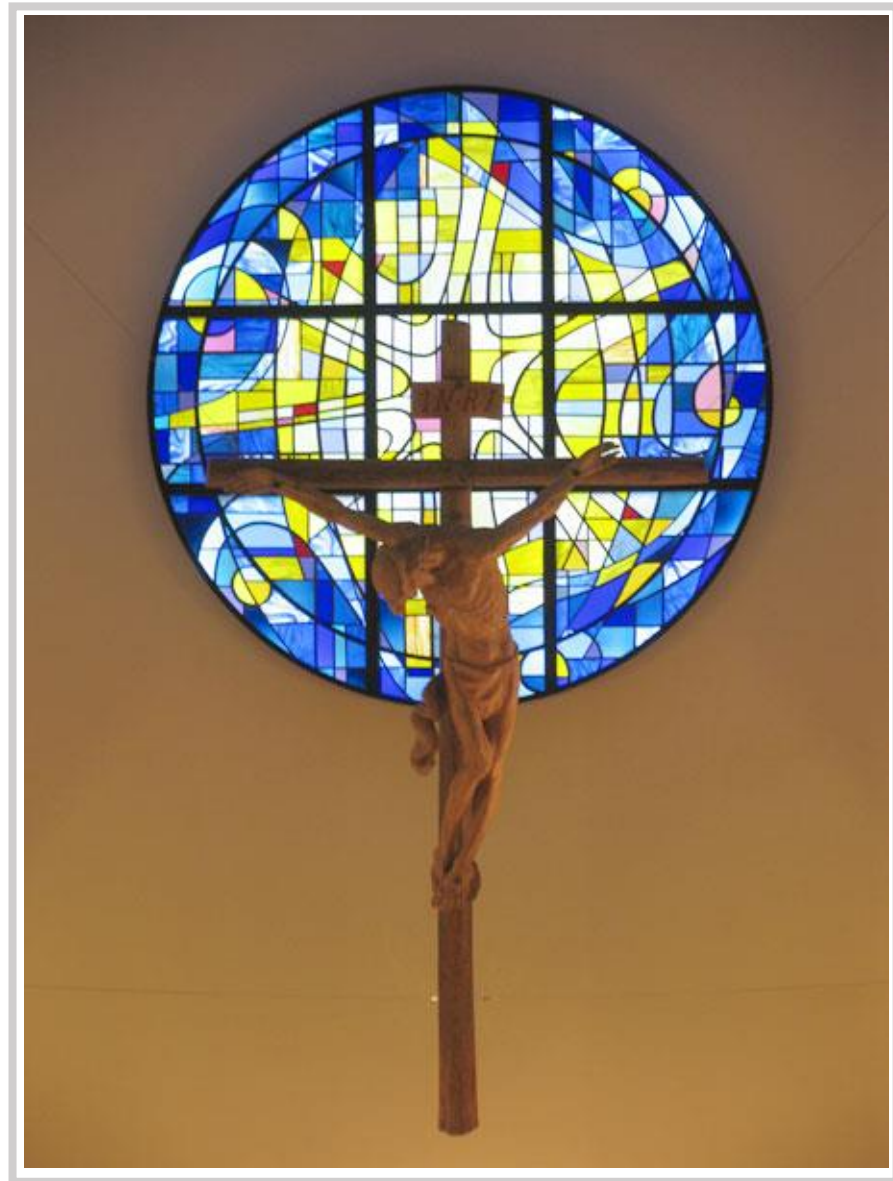
# Stained glass

Sophie D'Souza SCA

01

Stained Glass

NFS





# Stained glass

Sophie D'Souza SCA

02

Stained Glass

NFS



# Stained glass

Sophie D'Souza SCA

03

Stained Glass

NFS





# Stained glass

Sophie D'Souza SCA

04

Stained Glass

NFS



# Stained glass

Sophie D'Souza SCA

05

Stained Glass

NFS

[dsouzasophie@yahoo.com](mailto:dsouzasophie@yahoo.com)





# Stained glass

Marion De Souza SCA

Madonna and Child

Stained Glass

30.5 x 30.5 cm

NFS



# Stained glass

Mary Jean Donaghey SCA

Madonna and Child

Stained Glass

37 x 30 cm

NFS

[maryjeandonaghey5@gmail.com](mailto:maryjeandonaghey5@gmail.com)



Also see: 2D Works – Religious



# Stained glass

Deborah T. Forsdyke SCA

Chanctonbury Ring

Stained Glass

NFS



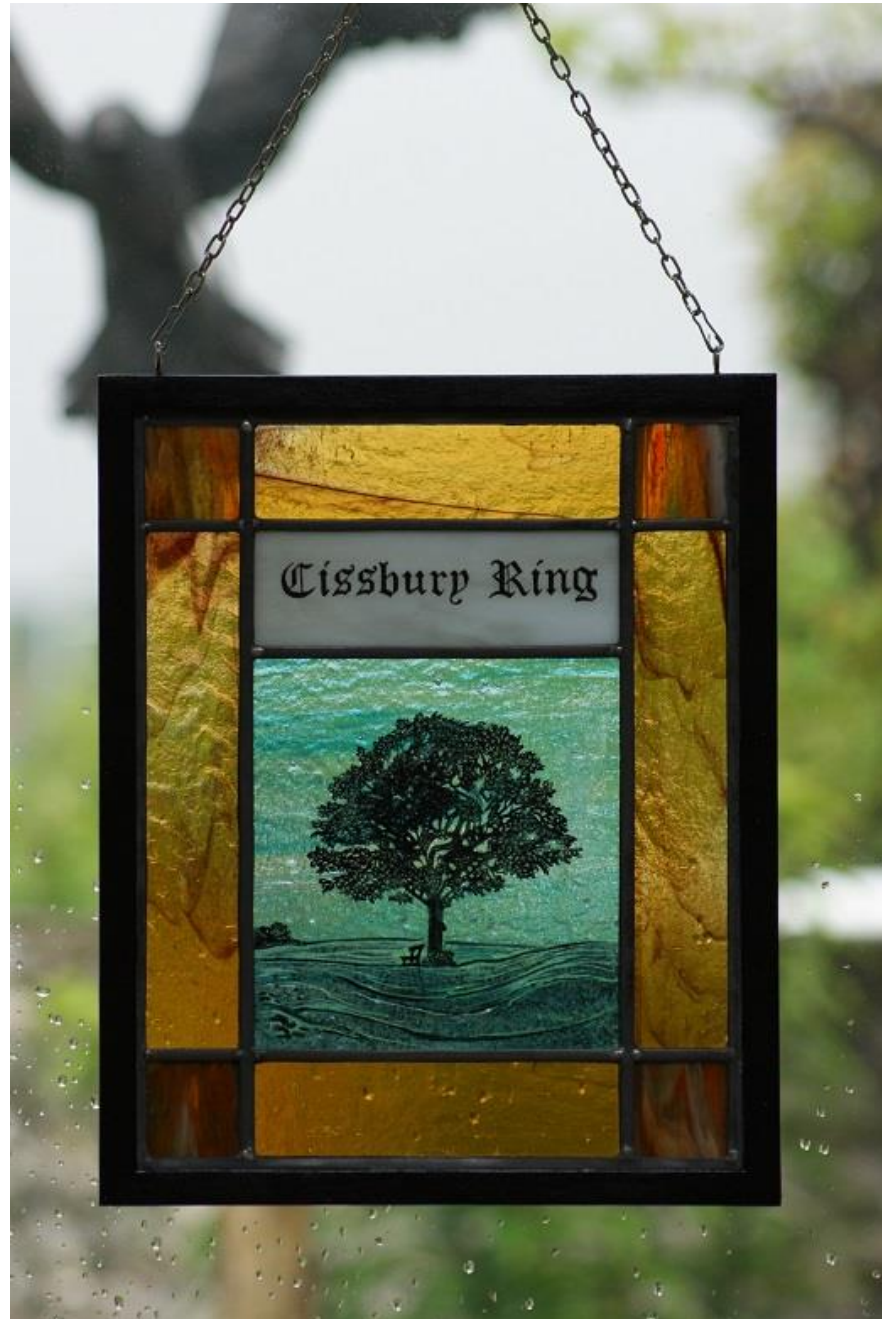
# Stained glass

Deborah T. Forsdyke SCA

Cissbury Ring

Stained Glass

NFS





# Stained glass

Deborah T. Forsdyke SCA

Hold On

Re-claimed and antique glass

NFS



# Stained glass

Deborah T. Forsdyke SCA

Wake Up

Re-claimed and antique glass

NFS





# Stained glass

Deborah T. Forsdyke SCA

Lancet Memorial Window  
St Peter's C of E Church, North Chailey

(Photographed by Frank Bull  
[www.frankbullphotographer.co.uk](http://www.frankbullphotographer.co.uk))

NFS



# Stained glass

Deborah T. Forsdyke SCA

Silver Stained Glass,

St. Peter's RC Church, Hove

(Photographed by Frank Bull  
[www.frankbullphotographer.co.uk](http://www.frankbullphotographer.co.uk))

NFS

[debbie@dtforsdyke.co.uk](mailto:debbie@dtforsdyke.co.uk)





# Stained glass

Barbara Fanning SCA CA

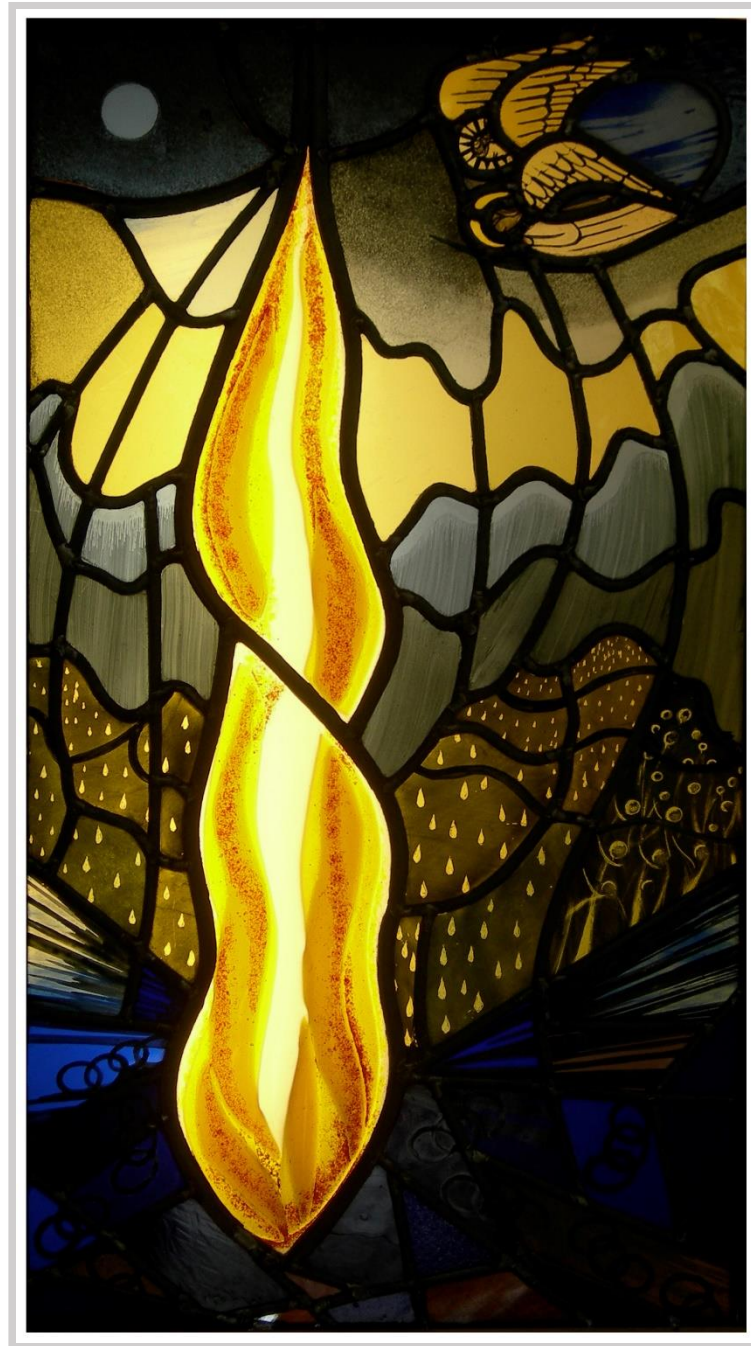
The Resurrection

Box with Stained Glass

4' x 1' x 1'

NFS

[dublin826@btinternet.com](mailto:dublin826@btinternet.com)



# Stained glass

Barbara Fanning SCA CA

St. Peter's Denial

Box with Stained Glass

4' x 1' x 1'

NFS

[dublin826@btinternet.com](mailto:dublin826@btinternet.com)

